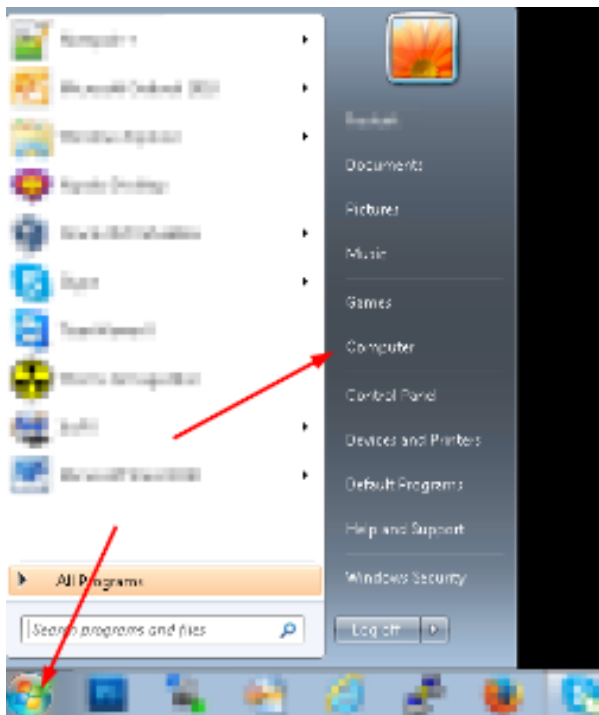


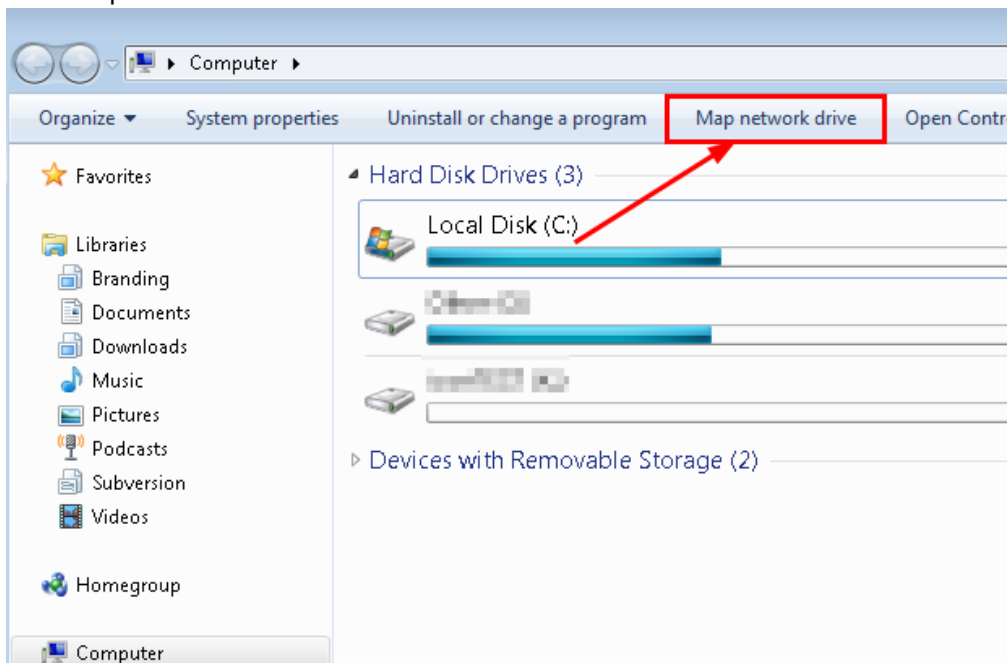
# WebDAV connection

## Windows

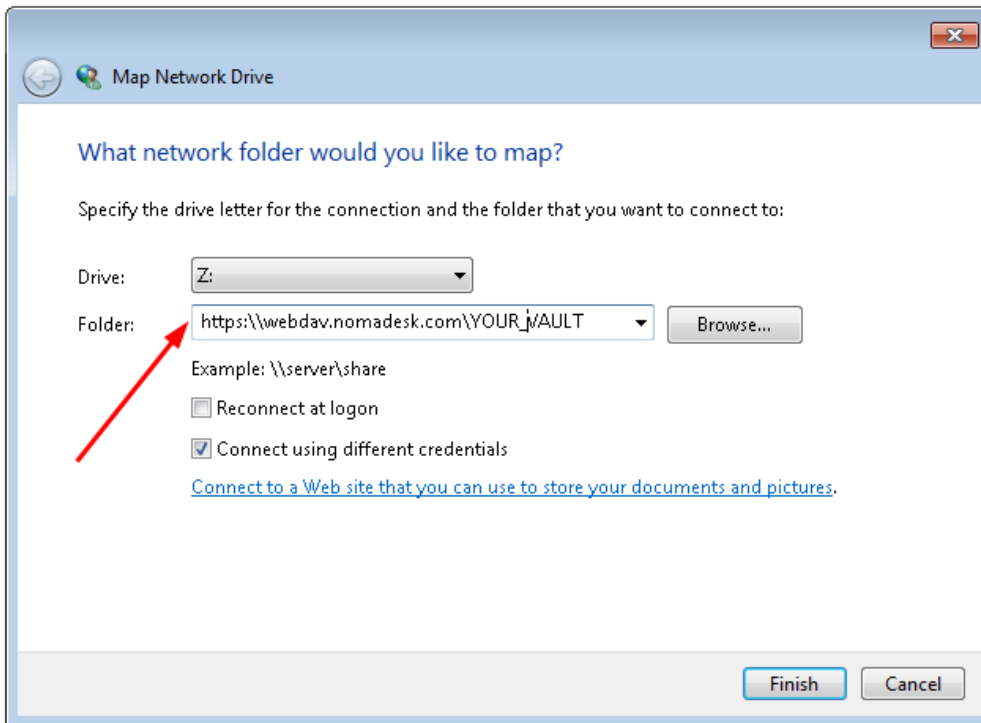
- click on Start



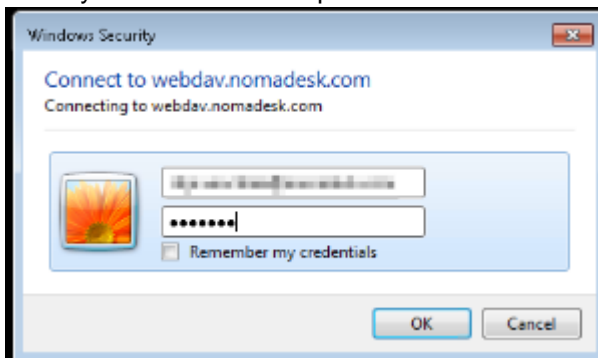
- click "map network drive"



- fill in the location and the Vault that you want to connect to. Be sure to check "connect using different credentials"



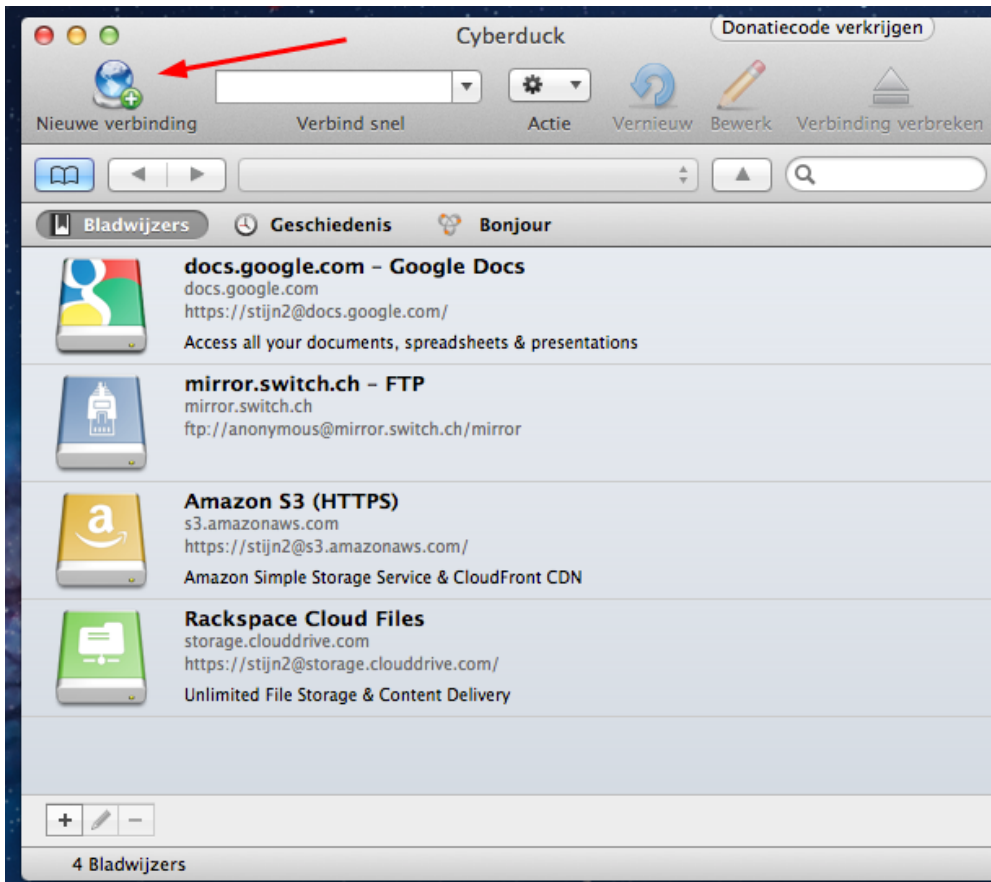
- fill out your username and password



- When your WebDAV is responding slowly on your Windows system, try the following:
  1. Start Internet Explorer.
  2. Click **Tools**, and then click **Internet Options**.
  3. Click the **Connections** tab, and then click **LAN Settings**.
  4. De-select **Automatically detect settings**.
  5. Click **OK**

## OSX

- connection to WebDAV via Finder is very slow, so it's better to use a program like **CyberDuck** (free)
- click on "new connection"



- select "WebDAV" from the dropdown menu
- fill out the correct link to connect
- in the "path" field, fill out the Vault you want to connect
- fill out your credentials

